



9 Albert Embankment, London  
Nine Elms SE1

GARTONJONES.COM



## 9 Albert Embankment, London Nine Elms, SE1

### £500 Per Week

A contemporary 1-bedroom apartment available to rent in 9 Albert Embankment, a modern development just moments from the banks of the River Thames. Offering 59sq.ft (52.sqm), the apartment offers stylish living space presented in good condition with a spacious open plan reception room, integrated modern kitchen, a balcony with partial views of the river, a generous double bedroom with fitted wardrobes and a modern bathroom. 9 Albert Embankment is a secure development with a 24-hour porter and benefits from being just moments from London's trendy South Bank and a great selection of shops, bars, and restaurants. Transport links include Vauxhall Underground Station (Victoria Line) for links into the City and West End.

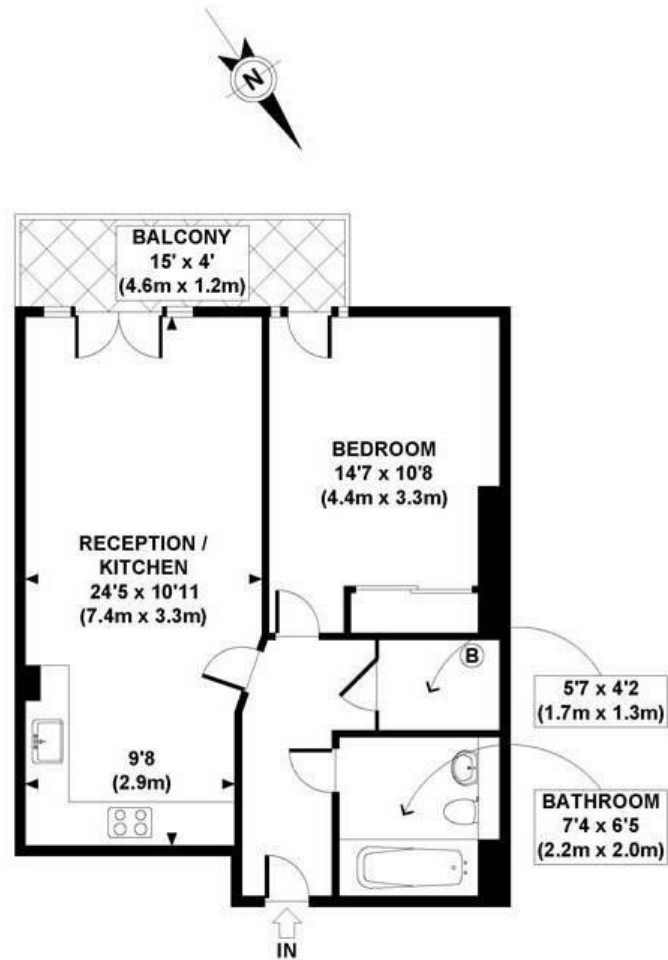
- 569sq.ft (52sq.m)
- Double Bedroom
- Private Balcony
- Good Storage
- Bathroom
- Open Plan Reception Room
- Modern Fitted Kitchen
- Moments from The Transport Services of Vauxhall - Including Bus, Tube & Rail Links
- 24 Hour Concierge
- Lambeth Council Tax Band E

## GARTON JONES.COM

9 Albert  
Embankment  
London  
SE1 7SP

Lettings:  
+44 (0) 20 7735 1888  
nineelms@gartonjones.com  
www.gartonjones.com





GROSS INTERNAL  
FLOOR AREA 569 SQ FT

APPROX. GROSS INTERNAL FLOOR AREA 569 SQ FT / 53 SQ M

